

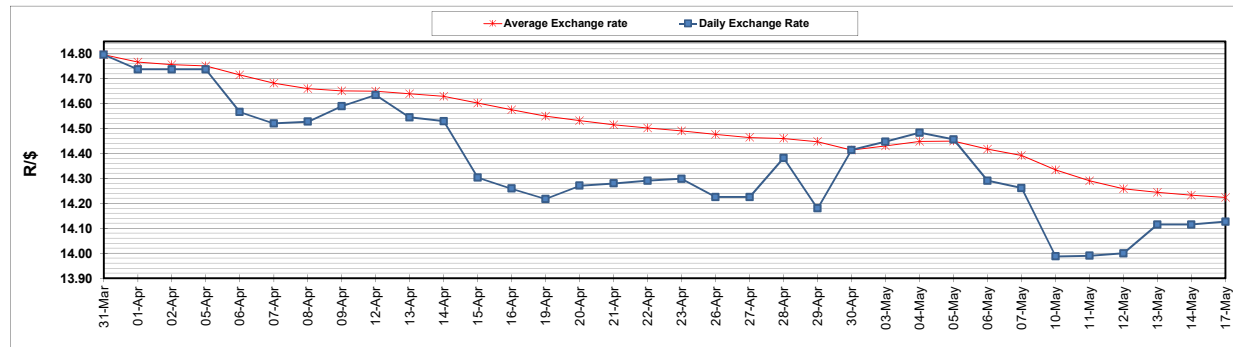
	PETROL 95 ULP	PETROL 93 ULP & LRP	DIESEL 0.05%	DIESEL 0.005%	ILL. PAR.
GAUTENG PUMP PRICE (SA c/l) AS FROM 05/05/2021	1,723.000	1,701.000	-	-	-
WHOLESALE PRICE (SA c/l) AS FROM 05/05/2021	-	-	1,446.620	1,450.020	857.488
SINGLE NATIONAL MAXIMUM RETAIL PRICE	-	-	-	-	1,076.000
BASIC FUEL PRICE - 17/05/2021 (SA c/l)	714.355	705.256	694.494	699.193	677.399
PRESS RELEASE CONTRIBUTION TO BFP 05/05/2021 - 17/05/2021 (SA c/l)	727.170	715.170	659.630	663.030	644.128
UNIT OVER/(UNDER) RECOVERY - 17/05/2021 (SA c/l)	12.815	9.914	(34.864)	(36.163)	(33.271)
AVERAGE BASIC FUEL PRICE 30/04/2021 - 17/05/2021	727.261	716.416	687.566	691.520	675.362
AVERAGE UNIT OVER/(UNDER) RECOVERY 30/04/2021 - 17/05/2021	2.159	1.004	(20.186)	(20.990)	(25.484)

ANALYSIS MOVEMENT OF AVERAGE OVER/(UNDER) RECOVERY

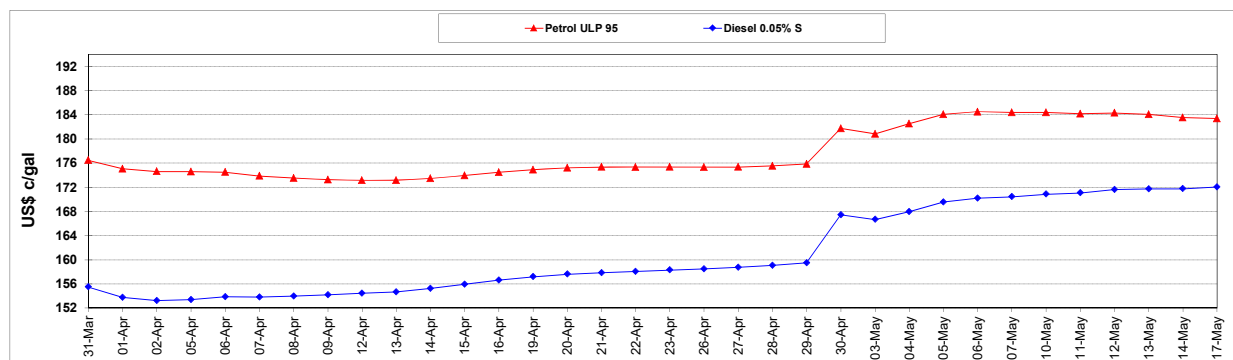
	PETROL 95	PETROL 93	DIESEL 0.05%	DIESEL 0.005%	ILL. PAR.
- MOVEMENT IN INTERNATIONAL PRODUCT PRICES	(9.294)	(10.278)	(31.014)	(31.880)	(36.120)
- MOVEMENT IN EXCHANGE RATE	11.453	11.282	10.828	10.890	10.636
AVERAGE UNIT OVER/(UNDER) RECOVERY 30/04/2021 - 17/05/2021	2.159	1.004	(20.186)	(20.990)	(25.484)

R/\$ EXCHANGE RATE - (R/\$14.1270- 17/05/2021)

EXCHANGE RATE USED IN BASIC FUEL PRICE



INTERNATIONAL PRODUCT PRICES OF BASKET USED IN BASIC FUEL PRICE



BASIC FUEL PRICE IN SA CENTS PER LITRE

